

# CHOP CUTTER **VORTEX**

## WFC-V36 1



Faster and more beautiful slice.

The most artistic frozen-meat slicer in the world has been finally launched.



**CAPACITY**  
**430** slices/min.  
**MAX**

## IMPROVED SLICE QUALITY

Outstanding better operation efficiency. The finest accuracy and the most artistic slice edge in the world.



## SAFETY SYSTEM

Not only the interlock system, but also safety device to detach the blade (Option) and safety sensor give you more safety operation.



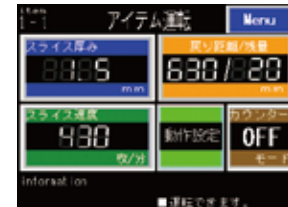
## MORE PRODUCT YIELD

Less meat dust inside of the blade cover. New meat catcher achieves less slice loss, the least is 20mm. Modify it 20, 30, or 40mm depends on the products without any tools.



## SLICE CAPACITY

The maximum slicing speed is 430 times/min. Despite its high speed, Watanabe proprietary technology enhances slicing accuracy and yield. The touch panel's operability has also evolved to ensure ease of use.



## OPTION

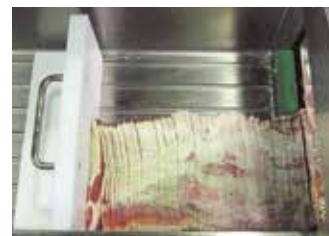
### MEAT CATCHER SYSTEM

Sliced productions are 'CATCHED' by the air pressure drive. This helps to decrease more labor costs.



### SCATTERING STOPPER

The scattering and curls are refrained from the beginning to the end of the slice. The small meat is also possible to be sliced without any slippage.



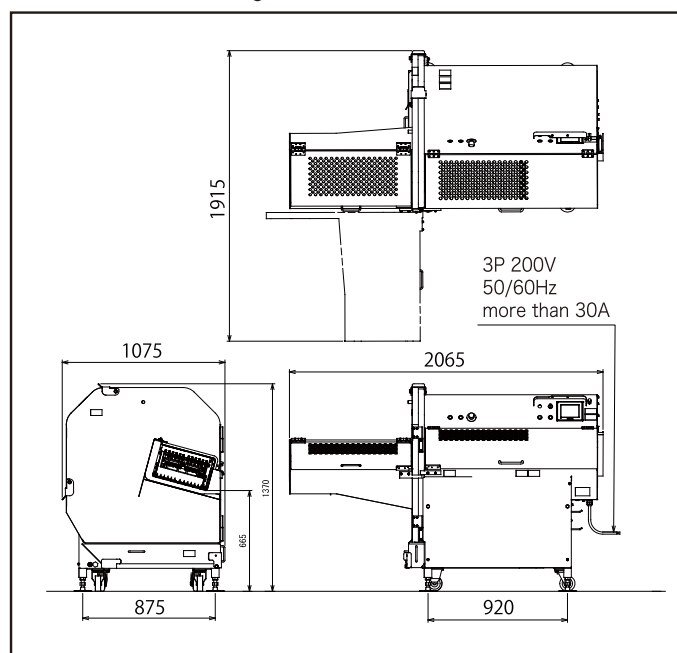
### WITH CONVEYOR

The conveyor can be attached on the outlet part. It will contribute the automation line.



### ■DRAWING

Please refer to the drawing for further information.



### ■SPECIFICATION

DIMENSIONS	W2065×WD1075×H1370mm
WEIGHT	570kg
MAX. SLICE SIZE	W360×H200×L630mm
SLICE THICKNESS	0.5~30mm (0.1mm control)
CAPACITY	100~430slice/min
SLICE TEMPERATURE	-6~-2°C (Depends on product)
SLICE ANGLE	0° (Fixed)
RATED ELECTRICITY	Output: 5.26kW Pated electric current: 28.1A
RATED CONSUMPTION	1.1kW/1.1kW (50/60Hz with no load)
POWER SUPPLY	3P 200V 50/60Hz more than 30A

**WATANABE**  
WATANABE FOODMACH CO., LTD.

2-12-26 TSUYHASHI NAKAGAWA-KU NAGOYA JAPAN  
TEL 052-361-8511 FAX 052-361-8490  
URL: <https://www.foodmach.co.jp/>

SALES AGENT